



Ellison Public School



Positive Behaviour for Learning
(PBL)

At Ellison
WE CARE



School Expectations

At Ellison
We are



o-operative



chieving



esponsible



ngaged

learners





What is PBL?

Positive Behaviour for Learning (PBL) is a whole school program that actively promotes positive behaviour. It enables students to develop a clear understanding of required expectations, become responsible for their own behaviour and work together to create a positive, productive and harmonious learning community.

For more information see the PBL website pbl.schools.nsw.gov.au

Ellison Public School PBL Mission Statement

To strengthen our connection with the community by promoting a positive culture of CARE, through evidence-based practices.

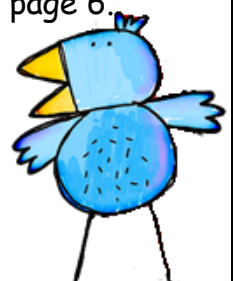
Our motto 'We Care' applies to all school settings with the expectation that our students will be Co-operative, Achieving, Responsible and Engaged Learners. Our school-wide expectations are represented with a bellbird mascot.



<u>Co-operative</u>	<u>Achieving</u>	<u>Responsible</u>	<u>Engaged</u>
<p>We</p> <ul style="list-style-type: none"> • Listen • are Courteous • Work Together 	<p>We</p> <ul style="list-style-type: none"> • Set Goals • Persevere to do our best • Believe in ourselves 	<p>We</p> <ul style="list-style-type: none"> • are Independent • are Trustworthy • are Respectful 	<p>We</p> <ul style="list-style-type: none"> • are Curious • Participate • are Focused

PBL is a data driven program. Therefore, what we learn from the data, such as specific inappropriate behaviours, affects what we do throughout the school in PBL. The Ellison Public School PBL committee meets regularly to organise the implementation of PBL systems and review data. Each fortnight, the school will have an area of focus that involves explicit teaching and support of positive behaviours. Teachers and students will participate in lessons that involve discussion and role-play.

Our school wide PBL universals define our expectations for all settings at Ellison Public School. For more information, please see the Ellison Public School Expectations matrix on page 6.





Learning and Working Together

At Ellison Public School we believe that Wellbeing contributes to making safe, effective teaching and learning environments that enable students to be healthy, happy, successful and productive.

We believe that children learn best when students, parents, carers and teachers have a common and transparent understanding of expectations.

Parents and carers are responsible for ensuring their children attend school everyday. They share in the responsibility of shaping their children's understandings and attitudes about acceptable behaviour. Please see your child's teacher first regarding any concerns you may have.

Teachers have a duty of care to their students and also the responsibility for providing programs which meet the needs of all students.

The school is responsible for communicating with parents and carers about behaviour and the educational progress of their students. The school is also active in teaching and role modeling appropriate social skills and behaviours which will not only help students achieve their potential, but will also allow them to be active and responsible participants in the community when they leave school.

At Ellison Public School we have four expectations in all areas of school life.



Co-operative



Achieving



Responsible



Engaged





Recognising Student Achievement

At Ellison Public School, we believe that recognising student achievement plays an important part in creating a positive, effective learning environment. Students are recognised for academic achievement and effort, for demonstrating school rules, expectations and citizenship, and for effort and success in extra curricular activities.

'Caught You Being Good' tickets

Students who are 'caught' following the school rules can be given a 'Caught You Being Good' ticket by any member of staff. These free and frequent tickets are used in any setting outside the classroom such as the office, Library and Technology lessons, Scripture, sport, assemblies and excursions. During each assembly 6 tickets (3 from K-2 and 3 from 3-6) are drawn from the 'Caught You Being Good' ticket boxes and winners choose a reward.

Bronze, Silver and Gold Awards

Each term students are recognised for demonstrating the behaviours and attitudes that contribute to being a Co-operative, Achieving, Responsible and Engaged Learner. Students are first awarded a Bronze level and can then progress each term to Silver, Gold and Maintaining Gold in term 4. The criteria for each level are set out below.

Bronze Level	Silver Level	Gold Level
<ul style="list-style-type: none"> • Care about other people's feelings • Obey school and class rules with my classroom teacher • Listen to others when they are speaking • 'Have a go' and attempt all tasks to the best of my ability • Clean up after myself • Be responsible for giving notes to my parents 	<ul style="list-style-type: none"> • Respect other people and be considerate of their feelings • Display consistent behaviour with all adults in all situations • Accept responsibility for my actions • Be courteous, co-operative, honest and friendly • Be a positive role model for my peers • Behave in a manner that allows others to learn • Be responsible for my own belongings 	<ul style="list-style-type: none"> • Consider the self esteem of others by the manner in which I speak and act • Display excellent behaviour with all adults in all situations • Display self discipline • Be encouraging, considerate and co-operative • Display a positive attitude and a high level of application to my own learning • Be a responsible representative of my school • Be responsible with school property

If children are successful in achieving their Bronze, Silver or Gold Bellbird after consistently displaying all of the desired criteria, they will receive a Bellbird Award (to take home) and a Bellbird Badge (which will be displayed on a class 'Wall of Honour'- they will then take the badges home at the end of the year).



Each term is divided into three sections of achievement. If the children are 'on track' in regard to following the criteria their teacher will shade in that section of achievement. If a child attends 'Reflection' or is not following the criteria the teacher will NOT shade in that achievement section. Teachers will also remind the child about the criteria they need to work on and the reasons why their badge was not achieved. In order to achieve ANY badge, the child must have three sections of achievement shaded. They do not have to be consecutive and can carry over into the next term.

The children are well aware of the criteria, how the process works and each class/grade discuss the expectations on a regular basis. The criteria are displayed around the school, and Ellison Public School has a consistent approach to its implementation.

We encourage children to aim to achieve GOLD level by the end of the school year, where they will be recognised with an award, badge and will also be invited to attend the Bellbird Principal's celebration BBQ.

Students who exceed this expectation will achieve MAINTAINING GOLD. They will receive a Bellbird pin and certificate, attend the celebration BBQ and take part in a special event at the end of the year to recognise this special achievement.

Please see your child's teacher if you have any questions related to the Bellbird Awards and thank you for your support in this endeavour.

Assembly Awards

Merit certificates are awarded at each fortnightly K-6 assembly for students demonstrating Co-operative, Achieving, Responsible and Engaged behaviours.

End of Year Presentation Day

The presentation assembly is held at the end of term 4 to recognise excellence. Certificates and book prizes are awarded by each class teacher for achievement and effort in key learning areas. A plaque is awarded for citizenship within each class and major academic, achievement, sporting and extra curricular awards are also presented.

Class Awards/Rewards

Each class teacher has developed incentives that meet the specific needs of their class. This may involve individual, small group or whole class rewards.





ELLISON PUBLIC SCHOOL EXPECTATIONS



Rule	ALL SETTINGS (including Canteen)	CLASSROOM (including Library, Technology and Scripture)	PLAYGROUND	LINES & MOVEMENT (including bus)	ASSEMBLIES	TOILET
CO-OPERATIVE	<ul style="list-style-type: none"> ✓ Wear school uniform ✓ Keep hands, feet and objects to yourself ✓ Be in the right place at all times ✓ Follow the instructions of all adults ✓ Move safely around the school 	<ul style="list-style-type: none"> ✓ Be tolerant of others and their opinions ✓ Share and take turns ✓ Use manners 	<ul style="list-style-type: none"> ✓ Ask to join in games and include others ✓ Follow the rules of the game ✓ Play appropriate games in designated areas ✓ Sit to eat and drink 	<ul style="list-style-type: none"> ✓ Stay in two straight lines behind leaders ✓ Walk at all times ✓ Stay on pathways ✓ Keep to your side of the stairs 	<ul style="list-style-type: none"> ✓ Enter and exit quietly ✓ Sit in area as directed by the teacher ✓ Stand and sit quietly when required 	<ul style="list-style-type: none"> ✓ Wait quietly ✓ Wait for friends outside
ACHIEVING	<ul style="list-style-type: none"> ✓ Try your best at all times ✓ Be a team member ✓ Be prepared ✓ Accept awards proudly ✓ Model appropriate behaviour for others 	<ul style="list-style-type: none"> ✓ Use time effectively ✓ Work cooperatively with others 	<ul style="list-style-type: none"> ✓ Make sensible choices about what and where to play ✓ Solve problems whenever possible ✓ Be a good friend 	<ul style="list-style-type: none"> ✓ Play ends when the bell rings 	<ul style="list-style-type: none"> ✓ Join in with the National Anthem and the school song 	<ul style="list-style-type: none"> ✓ Wash and dry hands
RESPONSIBLE	<ul style="list-style-type: none"> ✓ Care for everyone's belongings ✓ Use equipment safely ✓ Place all rubbish in the bin ✓ Be honest ✓ Treat others respectfully ✓ Report problems to a teacher 	<ul style="list-style-type: none"> ✓ Be responsible for your learning ✓ Follow classroom rules ✓ Solve problems calmly and accept consequences ✓ Walk in and around the classroom 	<ul style="list-style-type: none"> ✓ Wear a hat ✓ Walk on concrete ✓ Keep playground tidy 	<ul style="list-style-type: none"> ✓ Be mindful of others ✓ Wait patiently 	<ul style="list-style-type: none"> ✓ Applaud respectfully ✓ Use manners when receiving awards 	<ul style="list-style-type: none"> ✓ Use toilets appropriately ✓ Respect privacy ✓ Conserve water ✓ Clean up after yourself ✓ Use the toilet during break times
ENGAGED	<ul style="list-style-type: none"> ✓ Listen attentively ✓ Speak politely to everyone ✓ Challenge yourself ✓ Be an active learner 	<ul style="list-style-type: none"> ✓ Be prepared ✓ Sit quickly and quietly ✓ Listen to instructions 	<ul style="list-style-type: none"> ✓ Go to class quickly after the bell ✓ Play fairly 	<ul style="list-style-type: none"> ✓ Move quietly around the school ✓ All stages sit and stay in class and bus lines 	<ul style="list-style-type: none"> ✓ Listen and look at the speaker 	<ul style="list-style-type: none"> ✓ Return to class quickly during learning time



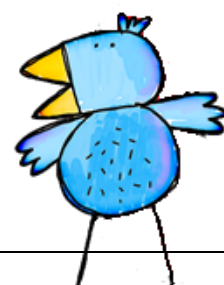


Behaviours of Concern

At Ellison Public School we have systems in place to ensure that unacceptable behaviour in the classroom and playground is handled effectively, fairly and consistently. Our aim is to provide a happy, safe and respectful school environment where all students can learn.

Procedures that apply to all students in the classroom and playground settings include:

- Minor incidents in the playground are managed by the teacher on duty who then completes an incident report slip or 'pink slip'. Classroom incidents are recorded on a 'yellow slip'. The slips are noted by the class teacher, assistant principal or principal (where required), recorded on the school database and filed.
- Time-out in the playground or classroom, walking and talking with the teacher while on duty or being referred to an assistant principal are consequences used for minor incidents.
- Lunchtime in the reflection room with an executive staff member is used as a consequence for ongoing behaviours or serious incidents. The student discusses their behaviour with the teacher and reflects on the consequences of their actions in writing. A letter is sent home to inform parents or carers of the reflection.
- If unacceptable behaviour continues parents may be notified by phone and students may be excluded from excursions, camps, representative sport and extra curricular activities.
- A formal caution letter and suspension from school for serious breaches of discipline are applied at the Principal's discretion and in accordance with the NSW Department of Education guidelines. Major behaviours of concern include: persistent racism or harassment towards other students or staff, violence, persistent disobedience, vandalism and possession of a weapon or drugs.





Anti-Bullying Policy

Bullying is repeated verbal, physical, social or psychological behavior that is harmful and involves the misuse of power by an individual or group towards one or more persons. Bullying can involve humiliation, domination, intimidation, victimisation and all forms of harassment. It is ongoing and affects the intended victim in a negative manner.

Bullying isn't the same as a mutual argument, disliking someone or teasing. Bullying is differentiated from teasing because of the bully's intention to do harm or gain power or control over someone else.

At Ellison Public School all students have a right to learn in an environment where they feel safe, secure and supported in all areas of school life. All students attending Ellison Public School should be free from any form of harassment or intimidation. Any inappropriate behaviour that interferes with the wellbeing of any student cannot and will not be accepted.

The aim of Ellison Public School's anti-bullying plan is to ensure that all students receive an education which caters to their individual learning needs in a highly supportive, happy and safe environment.

The Ellison Public School Anti-bullying Plan 2018 can be found on the school website.

All members of the school community are active participants in building a welcoming school culture that values diversity and fosters positive relationships. A key component of a supportive school culture is building respectful relationships and an ethos that bullying is not accepted, in both online and offline environments. School staff will actively respond to student bullying behaviour.

Effective schools have high levels of parental and community involvement. This involvement is strongly related to improved student learning, attendance and behaviour. Our school proactively builds collaborative relationships with families and communities to create a shared understanding of how to support student learning, safety and wellbeing.

Our school website has information to support families to help their children to regulate their emotions and behaviour and develop socially. Information is provided to assist if children have been involved in bullying behaviour (as the person engaging in bullying behaviour, as the person being bullied or as the person witnessing the bullying behaviour).

